

3.7M BUSHEL CAPACITY GRAIN STORAGE & RAIL TRANSFER FACILITY

1002 Main Ave W, West Fargo, ND 58078 | 12± Acres

FOR SALE



PROPERTY OVERVIEW

EXECUTIVE SUMMARY

Cushman & Wakefield and Peoples Company are pleased to offer a fully functional 37,500-square-foot grain facility with a substantial storage capacity of 3,726,485 bushels. Strategically positioned for efficiency and scale, the facility is equipped with on-site truck scales for streamlined logistics and direct BNSF rail access—ensuring seamless, reliable transportation and distribution.

PROPERTY HIGHLIGHTS



3.7 million Bushel Capacity



39 car capacity rail spur

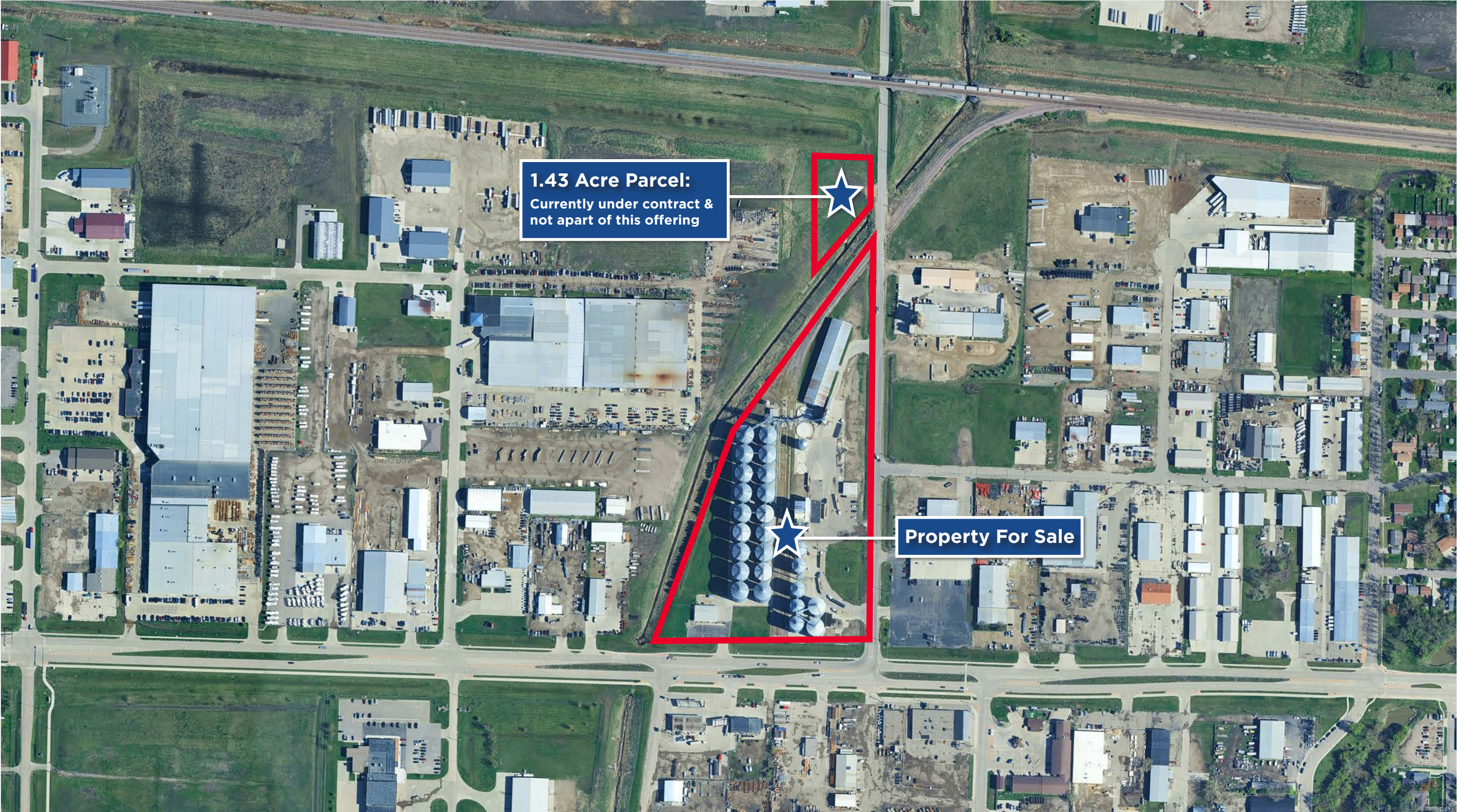


Two large Truck Scales



[CLICK HERE TO VIEW INTERACTIVE MAP](#)

PROPERTY OUTLINE



1.43 Acre Parcel:
Currently under contract &
not part of this offering

Property For Sale

PROPERTY DETAILS

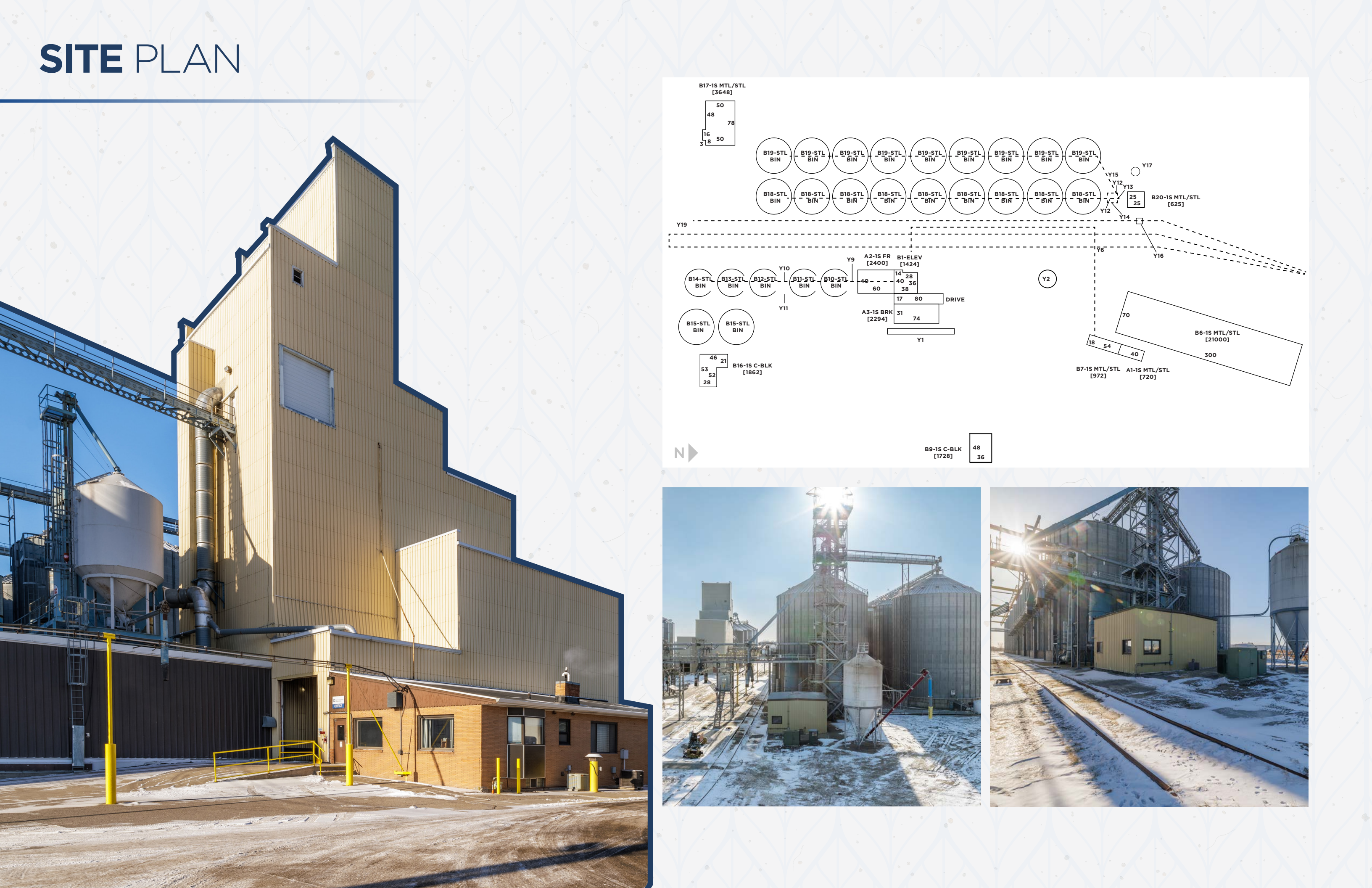
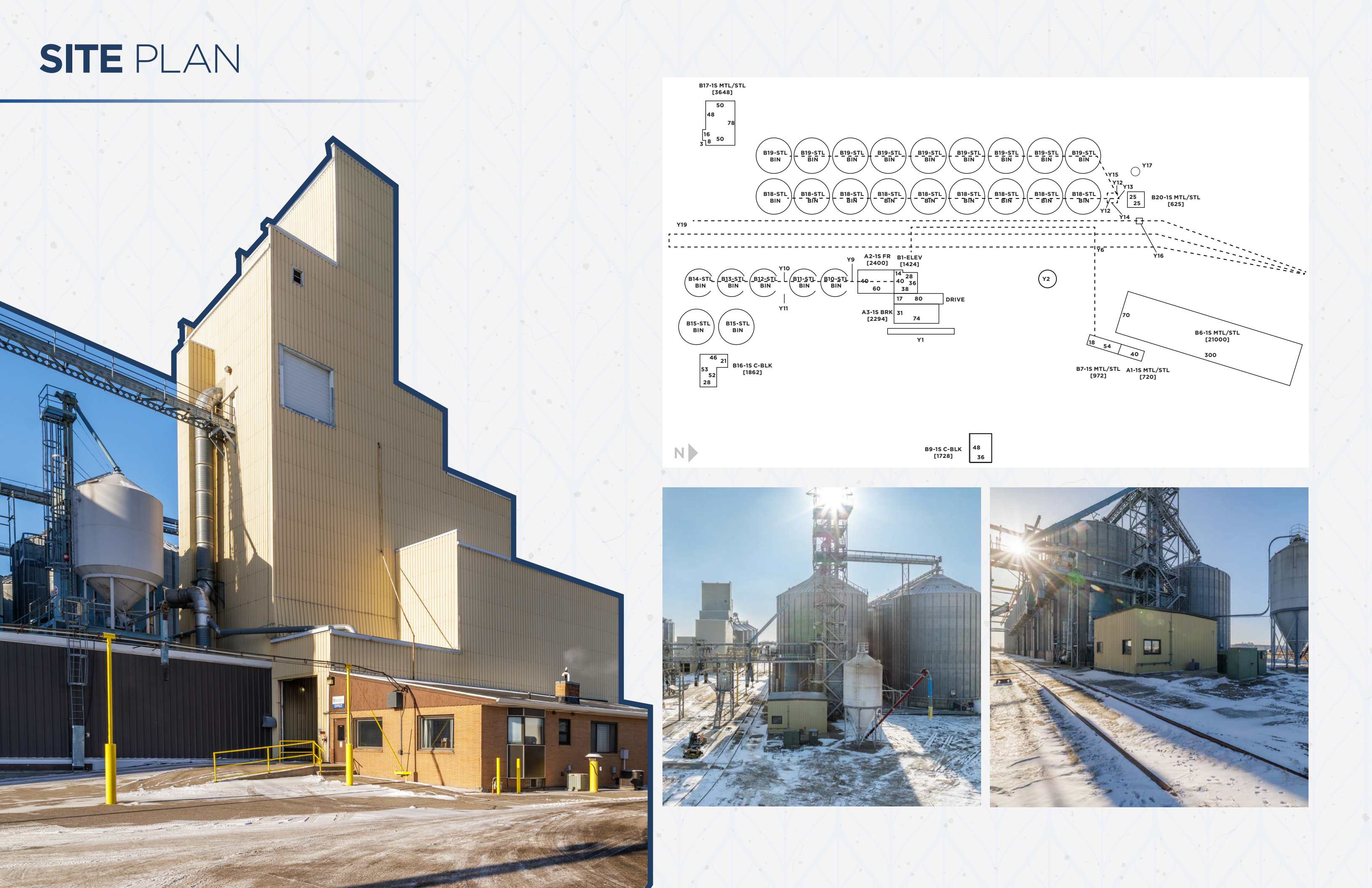
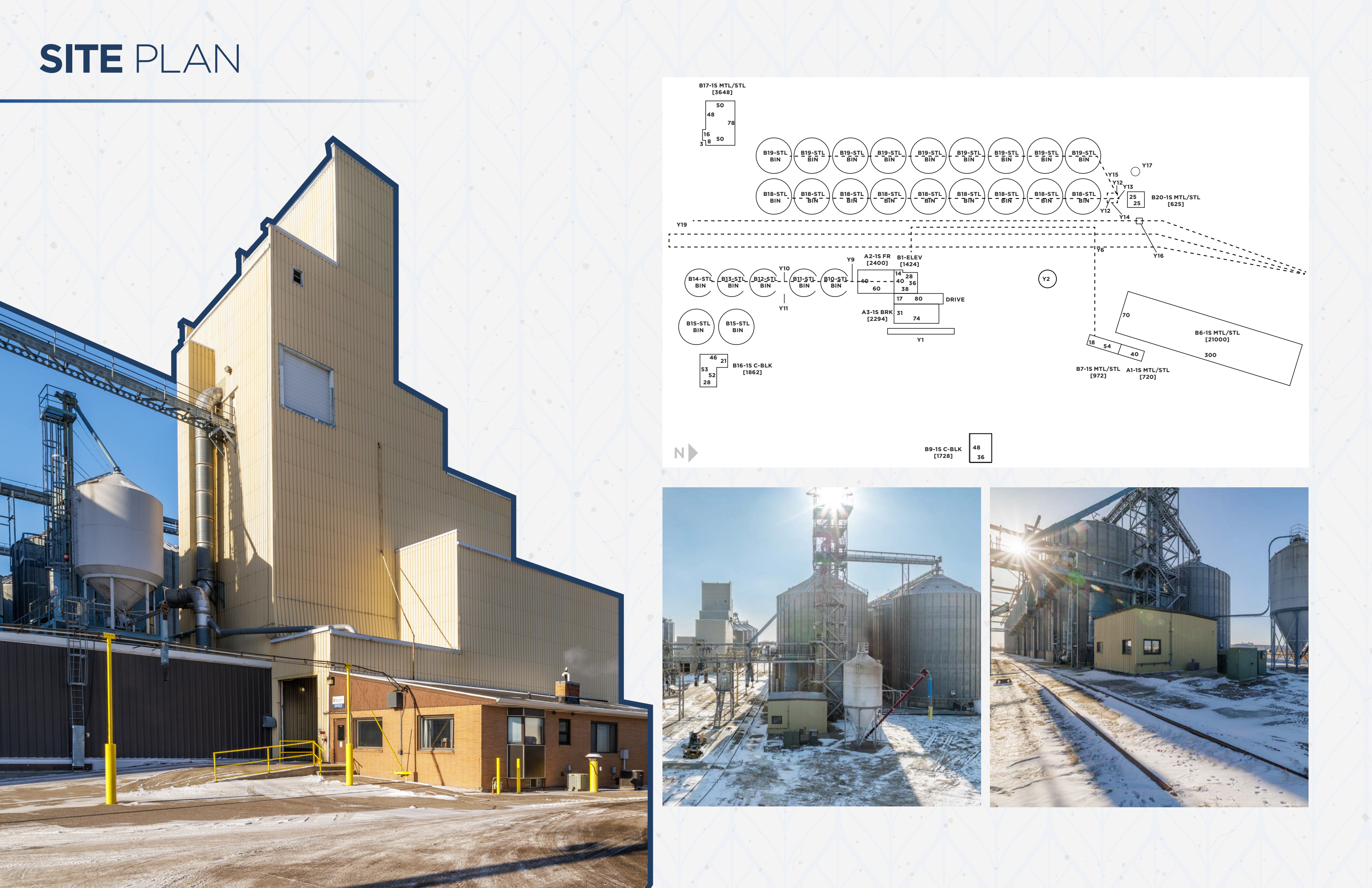
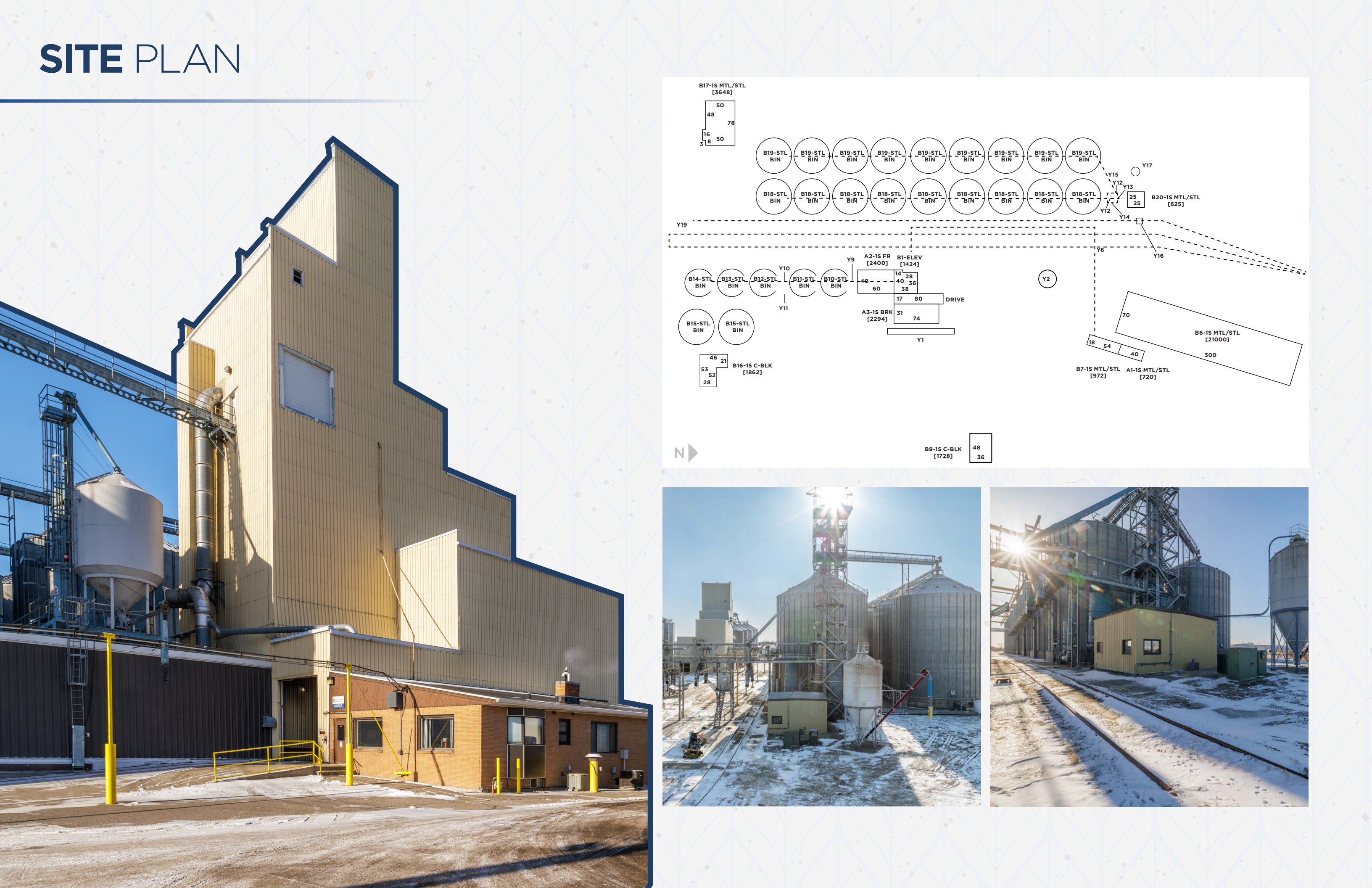
DETAILS

| |
|---|
| ADDRESS: |
| 1002 Main Ave W, West Fargo, ND 58078 |
| APNS: |
| 02-3000-00050-000 & 02-3000-0010-3000 |
| ZONING: |
| Heavy Industrial District |
| GROSS LAND ACRES: |
| 12.45 |
| TOTAL BUILDING SF: |
| 37,543 |
| BUSHEL STORAGE: |
| 3,726,485 SF |
| TOTAL BINS: |
| 29 |
| HANDLING (2 LEGS): |
| 10,000 BPH |
| RAIL SPUR: |
| 39 car capacity |
| RECEIVING: |
| Via Truck, 1(unused) rail pit |
| LOADOUT: |
| 2 Rail at 10,000 BPH |
| CONSTRUCTION: |
| Varying |
| YEAR BUILT: |
| 1950, 1952, 1970, 1986, 1989, 1990 |
| RAIL SERVICE: |
| BNSF |
| SCALES: |
| 100' Truck Scale at 160,000lb capacity, 70' Truck Scale at 100,000lb capacity |

ADDITIONAL DETAILS

- BIN TEMP MONITORING NOT UTILIZED, NOT FUNCTIONING
- STEEL BINS UTILIZE M ANUAL AERATION SERVICES
- 2 BAG FILTER SYSTEMS



[illegible]

AERIAL MAP

OFFERING TERMS

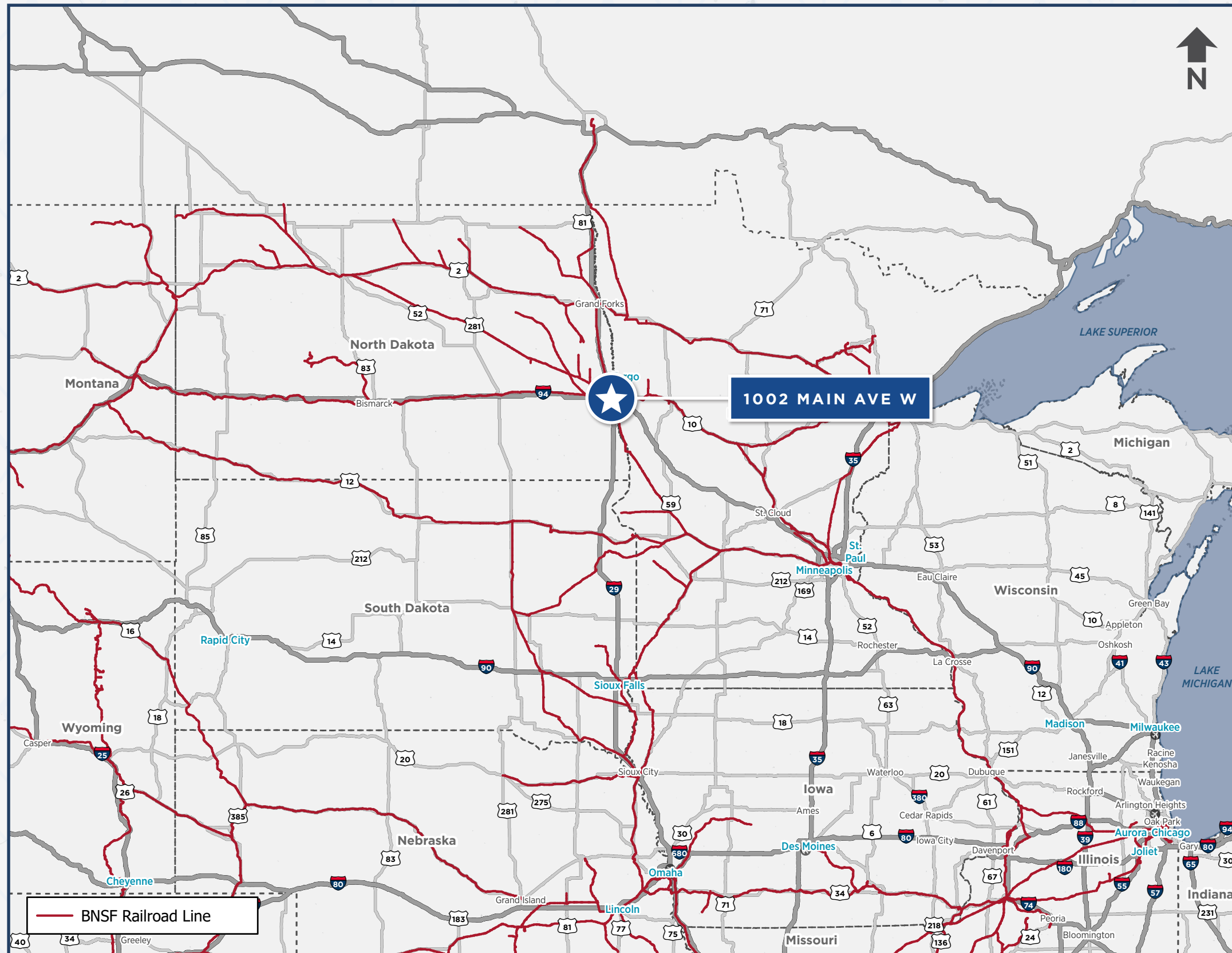
PRICE Call broker for details

OCCUPANCY The property will be unoccupied at closing

TOURS All tours must be coordinated through C&W



BNSF RAILROAD MAP





3.7M BUSHEL CAPACITY GRAIN STORAGE & RAIL TRANSFER FACILITY

1002 Main Ave W, West Fargo, ND 58078

Listed By:

LINDSEY BROWN

Land Agent

+1 701 371 5538

lindsey@peoplescompany.com

CHRIS WOOD

Vice Chairman

+1 312 424 8064

chris.wood@cushwake.com

ADAM MCCOSTLIN

Managing Director

+1 312 424 8034

adam.mccostlin@cushwake.com

LUKE SCHAMMEL

Senior Associate

+1 312 424 8098

luke.schammel@cushwake.com

Advisory Services Provided By:

MATT DAVIS

Managing Director

+1 619 772 7541

matt.davis@cushwake.com

JARED GROSS

Associate

+1 424 603 3383

jared.gross@cushwake.com

[CLICK HERE TO VIEW LISTING SITE](#)

©2026 Cushman & Wakefield. All rights reserved. The information contained in this communication is strictly confidential. This information has been obtained from sources believed to be reliable but has not been verified. NO WARRANTY OR REPRESENTATION, EXPRESS OR IMPLIED, IS MADE AS TO THE CONDITION OF THE PROPERTY (OR PROPERTIES) REFERENCED HEREIN OR AS TO THE ACCURACY OR COMPLETENESS OF THE INFORMATION CONTAINED HEREIN, AND SAME IS SUBMITTED SUBJECT TO ERRORS, OMISSIONS, CHANGE OF PRICE, RENTAL OR OTHER CONDITIONS, WITHDRAWAL WITHOUT NOTICE, AND TO ANY SPECIAL LISTING CONDITIONS IMPOSED BY THE PROPERTY OWNER(S). ANY PROJECTIONS, OPINIONS OR ESTIMATES ARE SUBJECT TO UNCERTAINTY AND DO NOT SIGNIFY CURRENT OR FUTURE PROPERTY PERFORMANCE.